

COLOR DIGITAL IMAGING SYSTEM



**LANIER**

**LD520C/LD525C**

*Convenient color in a smart design*

*These versatile systems make it easy for small offices and workgroups to handle every document task in black & white or color—without straining your budget*



# Make the Move to Color

Working harder isn't always enough when you need to outperform your competition or meet tight deadlines. You also have to work faster... more efficiently... and smarter. And all the while paying careful attention to your bottom line. That's why the LANIER® LD520C/LD525C are so groundbreaking. These incredibly versatile systems completely redefine what small offices and workgroups can do, at a price that makes perfect sense. Packed with the features you expect from a high-quality black & white MFP, they make it affordable to add attention-grabbing color. Plus with the optional internal finisher, you can create finished documents without sacrificing floor space. No matter what document tasks you handle every day, the Lanier LD520C/LD525C are the smart choice.

## **Smart, Cost-Saving Technology**

**The Lanier LD520C/LD525C deliver the capabilities of a world-class MFP with a total cost of ownership that meets the needs of budget-conscious users.**

- Maintain high productivity for every job. Deliver up to 25 pages-per-minute for full-color and black & white documents, from daily correspondence and Web pages to financial reports, customer presentations and proposals.
- Conserve energy and save money at the same time. Return these devices to a ready condition quickly with a warm-up time of 25 seconds and a first copy of 6.5 seconds for black & white and only 9.5 for full-color.
- Print critical documents in color while saving paper and filing space. Both systems can deliver two-sided documents at nearly 100% of simplex speed.
- Reduce costs and enhance your company's image. These four-in-one MFPs offer color output that is less expensive than inkjet—so you can cost effectively create professional documents that impress your most important customers.
- Keep outsourcing costs down—and confidential documents in-house. With your own color device, you get the color you want without relying on expensive outside vendors.
- Expect superior uptime and reliability from a MFP design that incorporates proven technology for document feeding, scanning and paper handling.



*The Lanier LD520C/LD525C feature one of the smallest available footprints for a full-color MFP.*



*Send documents to a remote fax machine without leaving your desk, saving time and ensuring the best image quality for every fax.*

## **Smart Design and Operation**

With one of the smallest footprints in its class, these systems do not take up valuable real estate. The user-friendly design also includes features that make it easy to complete any task in seconds.

- Save space with a compact design that lets you choose the configuration that is right for you. You can even add finishing capabilities—with a minimal increase to the system's original footprint.
- Navigate through any job easily with the 8.5" full-color W-VGA display. Users can preview stored documents for accuracy prior to output or view animated graphics for operational assistance.
- Enjoy a user-friendly design with overhand/underhand grips on paper trays and simple toner replacement.

## **Powerful Printing, Smart Results**

The Lanier LD520C/LD525C provide plenty of power for demanding network printing.

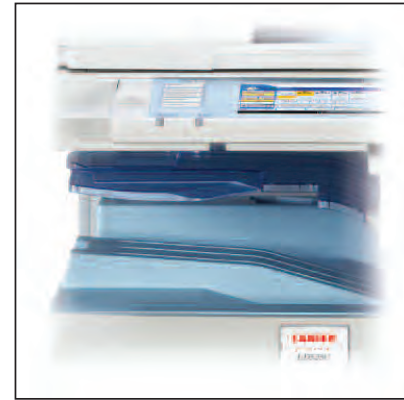
- Print your jobs faster and easier with a 533 MHz processor and up to 1 GB RAM.
- For powerful print performance, these systems offer the innovative, icon-driven Lanier Refined Print Command Stream (RPCS) driver, as well as PCL5c/6, XPS and optional genuine Adobe® Postscript® 3™ drivers.
- Captivate your customers with vivid color and black & white documents that feature crisp resolution up to a maximum of 1200 dpi.
- Accommodate offices with a variety of networking needs. The systems integrate seamlessly in Windows, Macintosh, UNIX or AS/400 environments with standard 10Base-T/100Base-TX Ethernet and USB 2.0 interfaces, as well as optional Gigabit Ethernet and wireless connectivity.

# Superior Versatility With a Space-Saving Design

## Everything you Need in a Single System

The **100-Sheet Inner One-Bin Tray (optional/shown)** separates copy output from prints and faxes.

The **Internal Shift-Sort Tray (optional/shown)** separates finished sets for easy pickup and delivery.



Print Jobs	
Select job(s).	
All Jobs	User ID    Date / Time
Jobs Per User ID	🔒 Trimborn    Aug. 21 02:50PM
Complete List	🔒 Mitrione    Aug. 21 02:20PM
🔒 Locked Print Job List	🔒 Hunter    Aug. 21 02:19PM
🔒 Sample Print Job List	🔒 Mitrione    Aug. 21 01:46PM
🔒 Hold Print Job List	🔒 Mitrione    Aug. 21 01:43PM
🔒 Stored Print Job List	🔒 Trimborn    Aug. 21 01:43PM
Details	1/1

With the available **Locked (Secure) Print** function, users can suspend document printing until a password is entered at the device to release the document.



The new **Scan-to-Media** feature allows you to take scanned documents with you in seconds with the **USB/SD card slot (optional/shown)**.

Produce professionally finished documents in-house with the **500-Sheet Internal Finisher (optional/shown)** with optional 2 & 3 hole-punching.



Add the **1 x 500-Sheet Paper Bank (optional)** with a lower height that allows access to all users. The **2 x 500-Sheet Paper Bank (optional/shown)** increases total paper capacity to 1,600 sheets. Up to five different paper sizes and orientations can be loaded for maximum versatility.





Handle one- and two-sided originals up to 11" x 17" with ease, using the **standard 50-Sheet Automatic Reversing Document Feeder** (shown).

Use the **Side Tray (optional/shown)** for an additional 50 sheets of output capacity.

The intuitive **Full-Color Control Panel** makes it simple to program jobs quickly.

Each of the **two standard front-loading Paper Trays** holds 250 sheets. The **standard Bypass Tray** holds an additional 100 sheets. All three accept a variety of paper types and weights.



The **standard Document Server** is a secure, virtual filing cabinet that stores up to 2,000 documents. Frequently used documents can be re-printed, re-faxed, and re-sent.



Cut paper usage in half with **standard automatic two-sided (duplex) output**.



**Lanier's PxP™ toner** ensures vibrant color output for all of your business documents and is environmentally friendly.

---

**Lanier LD520C/LD525C**

# A Smart Way To Work

## Smart, Time-Saving Features

The Lanier LD520C/LD525C make it affordable for smaller organizations and workgroups to take advantage of features normally reserved for more expensive devices.

- Distribute scanned files to any e-mail address instantly with Scan-to-Email, which does not require a dedicated server or additional software.
- Upload documents to a shared server for easy transfer with Scan-to-FTP. Or send files to a local server for automatic archiving with Scan-to-Folder.
- Store scanned documents directly to a USB memory device or SD memory card with Scan-to-Media for instant portability.
- Use High Compression PDF to dramatically reduce the file size of color documents. This alleviates the problem of large documents slowing down your network while still producing high-quality prints.
- Create sophisticated scanning workflows that can be recalled at the touch of a button with WSD scanning, which is compatible with Web Services On Devices for Windows Vista®.

## The Smart Way To Finish

Paper handling has never been so versatile in a MFP this small. Use a variety of paper stocks and sizes, then finish your documents completely in-line.

- Create finished documents without sacrificing floor space. Both systems offer an optional internal finisher, which has stapling and optional hole-punching.
- Print or copy spreadsheets, newsletters or other large documents on 11" x 17" paper. Or use the Bypass Tray for full-bleed output on up to 12" x 18".
- Keep productivity high for a variety of workgroup sizes with a total paper capacity of up to 1,600 sheets, a standard 50-Sheet Automatic Reversing Document Feeder and three standard paper sources.
- Produce postcards, posters, report covers and other documents on thick or unique stocks.

## Smart, Versatile Performance

Small offices and workgroups can add full-color capabilities and replace up to four separate devices with the Lanier LD520C/LD525C.

- Just plug in and log on to take advantage of efficient full-color network printing or copying.
- Send critical documents to customers, colleagues and other business partners with speed and convenience using an extensive array of Scan-to capabilities.
- Distribute fax documents quickly and easily with a Super G3 fax modem and 2,000 Quick Dials. Or reduce costs with advanced IP (T.38) and Internet (T.37) faxing technologies.



Reduce network traffic and transmit files more efficiently with Scan-to-URL, which stores documents on the system's Hard Disk Drive. Recipients can view and download the files from any Web browser.



Add color to your workflow without the risk of abuse. The optional Card Authentication Package provides secure user access and control to color printing/copying, scanning and other functions by swiping a user's existing identification card.



Forward incoming faxes to an e-mail address or folder, so users can receive important documents no matter where they are.

## Smart Businesses Require Efficient Systems

Unlike many other devices in its class, the Lanier LD520C/LD525C come packed with time-saving features that make daily tasks easier.

- Print a PDF or JPEG attachment automatically by sending an e-mail directly to the system using the innovative Mail-to-Print feature, which saves time and gives you even more flexibility for printing your documents.
- Reduce wait-time and network traffic with PDF Direct Print, which allows you to print PDFs without having to open them in Adobe® Acrobat®.
- Allocate print jobs to specific clients, workgroups or projects for chargeback using the Classification Code feature.
- Plug a PictBridge®-enabled digital camera into the MFP and print full-color photos in seconds.

## A Smart, Secure Choice

The Lanier LD520C/LD525C include the features required to increase security and ensure easy network administration.

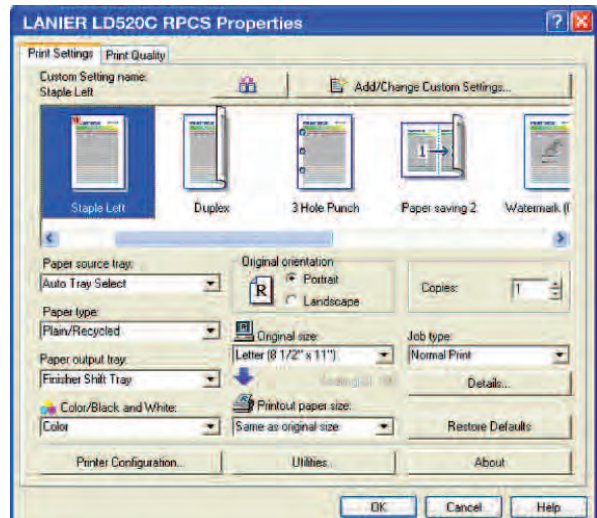


- Add color to your workflow without the risk of abuse. Several levels of authentication let you confirm user identity and control access to color printing, scanning and other functions.
- Prevent confidential documents from unauthorized viewing with Locked Print. It requires a password before it releases any file for output and deletes the file automatically from the MFP hard drive. You can also print and delete multiple documents in a single operation.
- Protect sensitive information with the DataOverwriteSecurity System (DOSS) option, which automatically overwrites the hard drive. Or use the HDD encryption option to protect your valuable data even if the hard drive is stolen.
- Reduce the risk of wiretapping with encrypted PDF transmission. This feature encrypts PDF data prior to transmission via Scan-to-Email and Scan-to-Folder.
- Encrypt all e-mail transmissions and defend against unauthorized network interception with S/MIME (Secure/Multipurpose Internet Mail Extensions).

## Utilities for Smart Management



- Manage the Lanier LD520C/LD525C remotely. Administrators can view system details, settings and supply status—all from a standard Web browser.
- Identify cost-saving opportunities instantly with Lanier @Remote™, a service solution that automatically collects device data (including meter reads), enables remote management, sends service and toner alerts and allows you to reduce Total Cost of Ownership (TCO) even further.
- Streamline your most important workflows with Embedded Software Architecture™, a Java-compatible Software Development Kit (SDK) that enables you to create unique applications.



The Lanier RPCS driver makes it simple to create one-click workflows. The driver creates one button you can press to repeat the job at any time—without having to reprogram the setup.



Use the Bypass Tray to print on a wide range of paper sizes, including envelopes.

## Your Environmental Partner



Lanier continues its long-standing commitment to developing office solutions with environmentally friendly and superior energy- and supply-saving features, without compromising productivity, including:

- Power-Saving Sleep Modes
- Duplex and Combine Copy Modes
- Energy-Saving PxF™ Toner
- Low Noise Levels
- Minimal Ozone Emissions
- Restriction of Hazardous Substances (RoHS) Compliant

**GENERAL SPECIFICATIONS**

<b>Printing Process</b>	Dry Electrostatic Transfer with Dry Dual Component Magnetic Brush Development System; 4-Drum Method
<b>Output Speed (Copy/Print)</b>	LD520C: 20-ppm BW & Full-Color LD525C: 25-ppm BW & Full-Color
<b>Warm-Up Time</b>	25 seconds
<b>First Copy Time</b>	Full-Color: 9.5 seconds BW: 6.5 seconds
<b>Copy Resolution</b>	600 x 600 dpi
<b>Document Feeder (Standard)</b>	Automatic Reversing Document Feeder (ARDF)
<b>Original Capacity</b>	50 sheets
<b>Paper Size</b>	5.5" x 8.5" to 11" x 17"
<b>Paper Weight</b>	Simplex: 11 lb. to 34 lb. Bond (40 - 128 g/m <sup>2</sup> ) Duplex: 14 lb. to 28 lb. Bond (52 - 105 g/m <sup>2</sup> )
<b>Exposure Glass</b>	Up to 11" x 17"
<b>Multiple Copies</b>	Up to 999 copies
<b>Copy Size</b>	11" x 17" maximum (full-bleed on 12" x 18")
<b>Input Capacity</b>	Standard: 2 x 250 sheets + 100-Sheet Bypass Tray Maximum: 1,600 sheets
<b>Output Capacity</b>	Standard: 500 sheets (Letter); 250 sheets (Legal/Ledger) Maximum: 550 sheets (with 500-Sheet Finisher and 50-Sheet Side Tray)
<b>Paper Sizes</b>	Standard Tray 1 and Tray 2: 7.25" x 10.5" to 11" x 17" Custom Sizes (Tray 1 and Tray 2): 5.83" x 7.17" to 17" x 11.69" Bypass Tray: 5.83" x 3.55" to 23.62" x 12"
<b>Paper Weights</b>	Standard Tray #1: 16 - 68 lb. Bond/140 lb. Index (60 - 256 g/m <sup>2</sup> ); Standard Tray #2: 16 - 45 lb. Bond/90 lb. Index (60 - 169 g/m <sup>2</sup> ); Bypass Tray: 14 - 68 lb. Bond/140 lb. Index (52 - 256 g/m <sup>2</sup> ) Duplex Unit: 16 - 28 lb. Bond (60 - 105 g/m <sup>2</sup> )
<b>Paper Types:</b>	Plain paper, laser printer qualified transparencies, labels and envelopes
<b>Auto Duplex</b>	Standard
<b>Zoom</b>	25% - 400% in 1% increments
<b>Preset Reduction and Enlargement Ratios</b>	93%, 85%, 78%, 73%, 65%, 50%, 25%
<b>Dimensions (WxDxH)</b>	400%, 200%, 155%, 129%, 121%
<b>Weight</b>	23.1" x 25.8" x 33.3" (587 x 655 x 845 mm)
<b>Power Requirements</b>	220 lbs. 120V, 60Hz, 12A

**OTHER COPIER FEATURES**

Auto Color Selection (ACS), Auto/Manual Density Control, Copy Mode - Photo Type Selection (Printed, Glossy, & Copied Photo), Combine Mode, Shift/Erase/Margin, Cover/Slip/Chapter Sheets, Color Creation Modes, Image Creation Modes, Stamps/Numbering, Color Adjustment, Image Adjustment, Image Rotation, Job Program (10), User Codes (440), Job Preset (8), Sample Copy, Batch Mode & SADF Mode

**SECURITY SPECIFICATIONS**

**DataOverwriteSecurity Unit (DOSS) Type I (Optional)** - Security feature that overwrites latent data on the system's hard drive after copy, scan, fax and print jobs.

**Copy Data Security Unit Type F (Optional)** - Copies of prints made with this feature will be blacked out or embedded with a watermark to deter illegal copying.

**HDD Encryption Unit Type A (Optional)** - This function encrypts the system's hard drive using 256 bits (AES) to protect against data theft.

**Other Security Features** - SNMP v3 and Data Encryption (password/address book); Locked (Secure) Print; User Codes; Basic Authentication; WPA (Wi-Fi Protect Access Support); IPsec Communication; Windows/LDAP/Kerberos Authentication; 802.1x Wired Authentication; SSL Communication; S/MIME; Network Protocol On/Off; IP Filtering (Access Control); Mask Type for Copying and more.

**PRINTER CONTROLLER (STANDARD)**

CPU	RM7035C @ 533MHz, Embedded
Memory	768 MB (512 MB + 256 MB) RAM

**www.lanier.com**

**Bringing Lanier Value to Your Organization**  
Lanier technology offers a diverse portfolio of solutions to help your organization stay competitive and move ahead. Let Lanier show you how to empower your business to improve critical processes, keep information secure, ensure compliance and promote environmental sustainability while reducing the total cost of ownership.

Printed in U.S.A. on recycled paper.

<b>Max. Print Speed</b>	(Standard); 1GB RAM (Maximum) & 60 GB HDD Standard (Shared) LD520C: 20-ppm BW & Full-Color LD525C: 25-ppm BW & Full-Color
<b>Page Description Languages</b>	PCL5c, PCL6, XPS, RPCS (Standard) Genuine Adobe® PostScript®3*, Includes PDF Direct Print & Mobile Printing (Optional)
<b>Max. Print Resolution</b>	1200 x 1200 dpi
<b>Standard Interfaces</b>	10Base-T/100Base-TX Ethernet (RJ-45), USB 2.0 Device, USB 2.0 Host I/F
<b>Optional Interfaces</b>	IEEE 802.11a/b/g Interface Unit Type J, Bluetooth Interface Unit Type 3245, IEEE 1284 Interface Board Type A, Gigabit Ethernet Type A
<b>Network Protocols</b>	TCP/IP (IPv4, IPv6), IPX/SPX, Apple Talk (Auto Switching)
<b>Fonts for PCL</b>	45 Intellifonts, 13 International Fonts, 6 Bitmaps
<b>Fonts for PS3</b>	136 Roman
<b>Network Operating Systems</b>	Windows 2000/XP/Vista/Server 2003/Server 2008*, Novell NetWare 3.12, 3.2, 4.1, 4.11, 5.0, 5.1, 6.6, 5, UNIX® filters for Sun Solaris, HP-UX, SCO OpenServer, RedHat Linux, and IBM AIX, MAC OS 8.6 - 9.2x; OS X 10.1+; SAP R/3, NDPS Gateway, IBM Series AS/400 using OS/400 Host Print Transform
<b>Utilities</b>	SmartDeviceMonitor for Admin and Client, Web SmartDeviceMonitor, Web Image Monitor

\*Server 2008 is not included on the driver CD. It is available via download from the Lanier website.  
\*For UNIX support, visit [www.lanier.com/downloads](http://www.lanier.com/downloads).

**OTHER PRINTER FEATURES**

Sample/Hold/Stored and Locked Print, Classification Code, PANTONE® Color Palette, Black Over Print, CLP Simulation, PictBridge™ Support, WSD printer, Bonjour Support

**SCANNER SPECIFICATIONS (STANDARD)**

<b>Scanner Resolution</b>	From 100 to 600 dpi (1200 dpi for TWAIN)
<b>Scanning Speed</b>	Default Setting: 200 dpi 41-ippm BW 26-ippm Full-Color (@200 dpi via ARDF)
<b>Scan Area</b>	Main Scan: 11.7" (297mm), Sub Scan: 17" (432mm)
<b>Scan Size</b>	Contact Glass: 11" x 17", 8.5" x 14", 8.5" x 11", 5.5" x 8.5"
<b>Compression Method</b>	BW: TIFF (MH, MR, MMR) Grayscale, Full-Color: JPEG
<b>Scan Mode</b>	Standard: BW Text/Line Art, BW Text, BW Text/Photo, BW Photo, BW Grayscale, FC Text/Photo, FC Photo
<b>Scan-to Modes Supported</b>	Scan-to-E-mail (with LDAP support); Scan-to-Folder (SMB/FTP/NCP); Scan-to-URL; Network TWAIN scanning; Scan-to-Media (USB/SD, optional); WSD scanner (for Vista)

**DOCUMENT SERVER (STANDARD)**

<b>Capacity</b>	60 GB (shared with other functions)
<b>Max. Stored Documents</b>	2,000 documents
<b>Max. Pages per Document</b>	1,000 pages
<b>Max. Pages of all Stored Documents</b>	6,000 pages

**FACSIMILE SPECIFICATIONS (OPTIONAL)\***

<b>Fax Option Type C2550</b>	ITU-T (CCITT) G3
<b>Type</b>	PS3N, PBX
<b>Circuit Resolution</b>	200 x 100 dpi, 200 x 200 dpi, 400 x 400 dpi (with optional SAF memory)
<b>Modem Speed</b>	33.6K - 2,400bps with Automatic Shift Down
<b>Compression Method</b>	MH, MR, MMR, JBIG
<b>Transmission Speed</b>	G3: Approx. 2 seconds/page (w/JBIG compression) G3: Approx. 3 seconds/page (w/MMR compression)

<b>Scan Speed</b>	40 pages/minute (Standard Mode) 38 pages/minute (Detail Mode) 20 pages/minute (Super Fine Mode) (2000 locations each)
<b>Auto Dialing</b>	2,000 Quick Dials, 100 Group Dials (2,000 locations each)
<b>Memory Capacity</b>	4 MB (approx. 320 pages); Maximum 28 MB (2,240 pages)
<b>Additional Modes</b>	Internet Fax (T.37), IP Fax (T.38), LAN Fax, Fax Forward to E-mail/Folder, LDAP Support, Detection of Misplaced Documents & Double Check Destination
<b>Options</b>	Handset Type 1018, Memory Unit Type B 32MB (SAF Memory)

\*Fax is standard on the LD520CSPF and LD525CSPF models

**HARDWARE ACCESSORIES**

<b>Paper Feed Unit (PB3070)<sup>1</sup></b>	
<b>Paper Capacity</b>	500 sheets x 1 Tray
<b>Paper Sizes</b>	7.25" x 10.5" to 11" x 17"
<b>Paper Weights</b>	16 - 28 lb. Bond (60 - 105 g/m <sup>2</sup> )
<b>Dimensions (WxDxH)</b>	21.7" x 20.5" x 5.4" (550 x 520 x 137 mm)

The Caster Table is required with the 500 x 1 Paper Feed Unit (PB3070).

<b>Paper Feed Unit (PB3030)<sup>1</sup></b>	
<b>Paper Capacity</b>	500 sheets x 2 Trays
<b>Paper Sizes</b>	7.25" x 10.5" to 11" x 17"
<b>Paper Weights</b>	16 - 28 lb. Bond (60 - 105 g/m <sup>2</sup> )
<b>Dimensions (WxDxH)</b>	21.7" x 20.5" x 10.7" (550 x 520 x 271 mm)

<b>Cabinet Type (FAC43)<sup>1</sup></b>	
<b>Internal 500-Sheet Finisher Type C2550</b>	
<b>Paper Sizes</b>	5.5" x 8.5" to 12" x 18"
<b>Paper Weights</b>	14 - 34 lb. Bond (52 - 128 g/m <sup>2</sup> )
<b>Stack Capacity</b>	500 sheets (8.5" x 11") 250 sheets (8.5" x 14" or larger)

<b>Staple Capacity</b>	50 sheets (8.5" x 11") 30 sheets (8.5" x 14" or larger)
<b>Staple Paper Sizes</b>	7.25" x 10.5" to 11" x 17"
<b>Staple Positions</b>	Landscape - Top Left Corner, Bottom Left Corner, 2-Top Sided, and 2-Left Sided; Portrait - Top Left Corner, Bottom Left Corner, 2-Top Sided, and 2-Left Sided
<b>Dimensions (WxDxH)</b>	21.1" x 20.7" x 8.1" (535 x 525 x 205 mm)

2/3-Hole Punch Unit Option (PU3010NA) available for Internal Finisher.

<b>Internal Shift-Sort Tray (SH3030)</b>	
<b>Paper Sizes</b>	5.5" x 8.5" to 12" x 18"
<b>Paper Capacity</b>	250 sheets
<b>Paper Weights</b>	14 - 67 lb. Bond/140 lb. Index (52 - 256 g/m <sup>2</sup> )
<b>Dimensions (WxDxH)</b>	16.9" x 18.8" x 4.2" (431 x 477.5 x 107 mm)

Internal Shift-Sort and/or Inner One-Bin Tray cannot be installed with 500-Sheet Internal Finisher.

<b>Inner One-Bin Tray (BN3060)</b>	
<b>Paper Sizes</b>	5.5" x 8.5" to 11" x 17"
<b>Bin Capacity</b>	100 sheets
<b>Paper Weights</b>	16 - 28 lb. Bond (60 - 105 g/m <sup>2</sup> )
<b>Dimensions (WxDxH)</b>	16.9" x 19.6" x 4.4" (429 x 497 x 113 mm)

<b>Side Tray Type C2550</b>	
<b>Paper Capacity</b>	50 sheets
<b>Paper Sizes</b>	5.5" x 8.5" to 11" x 17"
<b>Paper Weights</b>	16 - 28 lb. Bond (60 - 105 g/m <sup>2</sup> )
<b>Dimensions (WxDxH)</b>	18.9" x 18.9" x 6.7" (480 x 480 x 170 mm)

<sup>1</sup>Please note either the Cabinet Stand or one of the paper options must be installed.

**ADDITIONAL ACCESSORIES**

Caster Table Type B, PostScript3 Unit Type C2550, Camera Direct Print Card Type E, JAVA VM Card Type I, Key Counter Bracket Type H, File Format Converter Type E, Optional Counter Interface Unit Type A, USB 2.0/SD Slot Type A, 512 MB Memory Unit Type I.

**CONSUMABLES\***

Black Toner Cartridge: 10K  
Cyan, Magenta, & Yellow: 5.5K  
\*Toner yields based on 5% coverage.

For maximum performance and yield, we recommend using genuine Lanier parts and supplies.



Lanier, Five Dedrick Place, West Caldwell, NJ 07006

©2008 Lanier is a registered trademark of Ricoh Americas Corporation. All other trademarks are the property of their respective owners. Print speed may be affected by network, application or PC performance. Specifications and external appearances are subject to change without notice. Products are shown with optional features.