

COLOR DIGITAL IMAGING SYSTEM



**LANIER**

**LD540C/LD550C**

*Vibrant color with speed and flexibility*

*Count on these versatile systems to deliver superior color output for any application, with flexible multifunctional capabilities designed to increase productivity and efficiency*



# Add Color When It Counts

The fast and flexible Lanier® LD540C/LD550C completely redefine what you can expect from cost-effective, full-color multifunctional systems. Based on an award-winning design, both models provide outstanding color quality for all your business-critical documents, as well as crisp, detailed results for black & white output—so you can impress customers and hold their attention when you need it most. They also offer scanning, faxing and professional finishing, plus innovative tools for streamlining workflow and optional high-end color control. These dynamic, affordable systems make it easy for any organization to complete more color jobs in-house and significantly boost productivity.

## ***Fast Output For Any Document***

**Rely on the Lanier LD540C/LD550C to deliver outstanding speed and productivity whether you need full-color or black & white documents, or a mix of both.**

- Print and copy comps, presentations, spreadsheets and other jobs at speeds up to 40 or 50 pages-per-minute in full-color and black & white.
- Start every job faster. First color copy times are 6.5 or 5.9 seconds, and 3.9 or 3.5 seconds for black & white. You can also expect short warm-up and recovery times from Off/Sleep mode.
- Handle large color files and complex print jobs quickly and easily. Both systems come standard with a 1 GHz controller, 1 GB RAM and a 160 GB Hard Disk Drive.
- Get connected in any environment. Meet local networking requirements with a wide range of standard and optional interfaces, plus compatibility with Windows, Macintosh, Unix and AS/400.

*The Lanier LD540C/LD550C deliver everything you need to accelerate workflow for color and black & white documents.*



# LD540C/LD550C



*The large, full-color W-VGA control panel makes it easy to program jobs in seconds. It also offers a Simplified Display option and animated user guidance for common tasks.*

## **Consistently Impressive Color**

The Lanier LD540C/LD550C use a powerful combination of patented PxP™ Toner and sophisticated print engines to provide bold, vivid color for any application.

- Use color to enhance your image. Replacing conventional black & white with compelling color lends a distinctively professional look and feel to your documents. It makes key messages more memorable and helps your company stand out.
- Expect vibrant results for important documents—such as client proposals, new business plans or competitive bids—with resolutions up to 1200 x 1200 dpi.
- Reduce expensive outsourcing. These systems allow users to produce a wide range of professional color documents very cost effectively, in-house.
- Eliminate the risk of fraud and abuse. Control access to color capabilities and tightly manage costs with a wide array of security features.

## **Convenient Professional Finishing**

Expand the range of documents you can produce. The Lanier LD540C/LD550C offer a full line of paper handling and finishing options.

- Fuel your creativity. Print on many stocks and sizes, and generate a range of finished styles from three-hole-punched training packets with covers to postcards, spreadsheets, presentations, and more. The systems support output sizes up to 12" x 18" (through the Bypass Tray) and accept paper weights up to 140 lb. Index.
- Finish a wider variety of jobs without outsourcing. Choose from an optional 1,000-Sheet Finisher with stapling, a 2,000-Sheet Booklet Finisher with saddle-stitching and optional hole-punching, or a 3,000-Sheet Finisher with stapling and optional hole-punching.
- Print or copy lengthy documents without stopping to reload paper. The systems offer a standard paper capacity of 1,200 sheets.
- Increase paper capacity to meet the needs of high-volume workflows. Options include a Two-Tray Paper Bank, a 2,000-Sheet Tandem Large Capacity Tray (LCT) or a 1,200-Sheet Side LCT. Maximum paper capacity (with both LCTs) is 4,400 sheets.



*Take your files with you instantly by scanning them directly to removable media, such as a SD card or USB flash drive.*

# Versatile Multifunctional Capabilities

## Do More Than Ever Before

To maximize efficiency, the Lanier LD540C/LD550C can be equipped with advanced, yet easy-to-use scanning, faxing and document distribution technologies.

- Deliver documents to any destination instantly. Available Scan-to functions include Scan-to-E-mail for rapid delivery, Scan-to-Folder for automated archiving and information sharing, Scan-to-Media (USB/SD) for document portability and Scan-to-URL to reduce network traffic.
- Minimize file size, reduce network traffic and maintain exceptional image quality by converting scanned files into High Compression PDFs.
- Send or receive fax documents electronically with Internet (T.37) faxing, use LAN faxing to send faxes from a PC without leaving your desk, or use IP (T.38) and Super G3 faxing for quick delivery to conventional fax numbers.
- Reduce the risk of fax errors. Both systems detect blank pages and enable users to double-check fax destinations prior to transmission.
- Print a PDF or JPEG attachment by sending an e-mail directly to the system using the innovative Mail-to-Print feature, which saves time and gives you even more flexibility for printing your documents.

## Exceptional Accessibility

Designed for convenient accessibility for everyone in the workplace, these systems incorporate user-friendly features that make them easier to operate and align with Section 508 requirements.

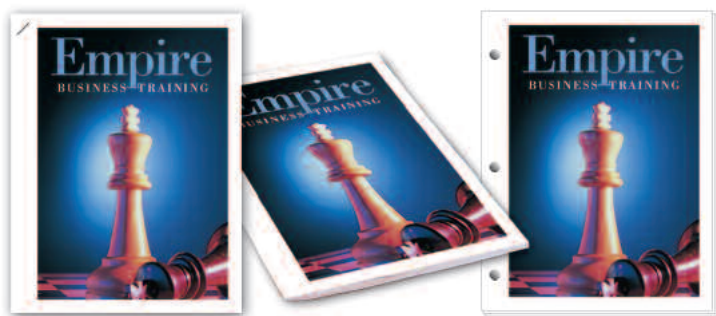
- Improve ease of use with the large, full-color W-VGA control panel. You can also use the Simplified Display feature, which shows fewer function keys and uses a larger screen font.
- Get animated, step-by-step instructions for routine tasks, such as clearing paper misfeeds or replacing toner.
- Accommodate all users with a convenient design. Toner cartridges can be replaced with one hand. Paper trays can be easily opened with an overhand or underhand grip. Also, the scanner and document feeder can be detached and placed on a desk, making every function accessible to all users.
- Handle a long list of document and device management tasks remotely. View detailed system information and network settings, and monitor supply status right from a standard Web browser.



The Simplified Display shows only a select group of the most commonly used features, which makes it even easier for users to set up jobs.



All of these organizations and many more are among a long list of Lanier solution partners.



Handle more jobs in-house—and reduce expensive outsourcing—with fast, high-quality color and a full line of finishing options.

## Strong Investment Protection

Organizations of any size can benefit from the Lanier LD540C/LD550Cs' superior productivity, reliable performance and low total cost of ownership (TCO).

- Maximize uptime and reliability. Both systems are engineered to keep pace with even the most demanding workloads, so you can keep TCO as low as possible.
- Take advantage of full-color workflows without compromising your budget. These systems make it more affordable than ever to get color exactly when you need it.

## Precise Color Control

Add the optional EFI Fiery™ Controller to achieve high-end color control and management for professional workflows.

- Take full advantage of the print engines' outstanding color capabilities for graphics-intensive applications and accurate spot color matching.
- Fine-tune color output for application-specific needs. With the EFI Fiery™ Controller's built-in tools, you can achieve superior results for RGB, CMYK and even PANTONE® colors.
- Print complex color documents such as page layouts, concept drawings or proof sheets quickly, consistently and accurately with the additional firepower of a Fiery™ Controller.
- Control workflow, reprint jobs and even combine documents with the powerful Command WorkStation™ tool.

## Ironclad Security

A complete line of security features helps keep sensitive documents and the systems themselves safe from a variety of threats.



- Use encrypted PDF transmission to prevent unauthorized data interception. This feature encrypts PDF data for both Scan-to-Email and Scan-to-Folder applications.
- Control which individuals have access to which system functions, such as scanning or color copying, with robust User Authentication.
- Protect business-critical information with the DataOverwriteSecurity System (DOSS) option. It automatically overwrites the hard drive after copy, scan, fax and print jobs, so hackers can't steal confidential files. You can also use the HDD Encryption option to protect data, even if the hard drive is removed or stolen.

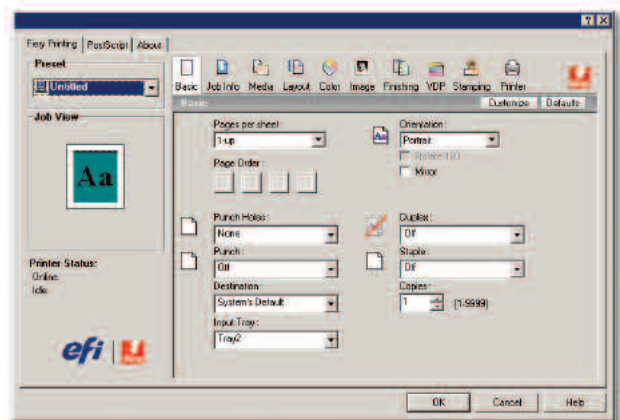
## Advanced Document Solutions

With the Lanier LD540C/LD550C, offices can utilize an extensive portfolio of powerful, easy-to-integrate software solutions from Lanier and a growing number of innovative technology partners.

- Transform your MFP into a document portal with proven solutions from Lanier. Specifically developed for Lanier MFPs, these advanced solutions enable document capture and distribution, storage and management, variable data printing, assessment and cost recovery, device management and print security.
- Leverage the smartest, most effective workflow tools and streamline every aspect of your organization with Lanier. We partner with industry-leading technology innovators to make sure our MFPs can serve as on-ramps to an extensive selection of applications for content management and other business-critical activities.
- Create specialized, custom applications for the Lanier LD540C/LD550C with Lanier's Embedded Software Architecture™, a Java-compatible Software Development Kit (SDK).



The detachable scanner option makes these systems' functions completely accessible to all users.



For greater control over workflow, color management and spot color matching, choose the optional EFI Fiery™ Controller.

## Your Environmental Partner



Lanier continues its long-standing commitment to developing office solutions with environmentally friendly and superior energy- and supply-saving features, without compromising productivity, including:

- Power-Saving Sleep Modes
- Duplex and Combine Copy Modes
- Energy-Saving PxD™ Toner
- Low Noise Levels
- Minimal Ozone Emissions
- Restriction of Hazardous Substances (RoHS) Compliant

# Versatile Color Capabilities

## Designed to Enhance Productivity

The Lanier LD540C/LD550C can be equipped with a **1,000-Sheet Finisher** or **3,000-Sheet Finisher** for traditional stapling, or a **2,000-Sheet Booklet Finisher** (shown) for professional-quality booklet-making. The 3,000-Sheet Finisher and 2,000-Sheet Booklet Finisher both offer optional hole-punching.



If no finisher is installed, add the **optional Internal Shift-Sort Tray** to collate document sets. (This tray cannot be installed with other optional finishers.)

The **optional Inner One-Bin Tray** provides a cost-effective way to separate copy, print and fax output.

Add a **Two-Tray Paper Bank** (shown) or the **2,000-Sheet Tandem Large Capacity Tray (LCT)** for maximum versatility. Both options accept stocks up to 140 lb. Index. Or add a **Cabinet Stand** if the standard paper supply meets your needs.



# Lanier LD540C/LD550C

## OPTIONAL HARDWARE ACCESSORIES



The standard **100-Sheet Automatic Reversing Document Feeder** easily handles one- and two-sided originals up to 11" x 17".

Standard **Automatic Stackless Duplexing** produces cost-saving two-sided booklets, brochures, agendas, and more.



Choose the **optional 1,200-Sheet Side Large Capacity Tray (LCT)** to boost maximum paper capacity to 4,400 sheets (with Tandem LCT).

Two **Standard Paper Trays** each hold 550 sheets. With the **100-Sheet Bypass Tray**, total standard paper capacity is 1,200 sheets.

### Two-Tray Paper Bank (PB3040)<sup>1</sup>

Paper Capacity 1,100 sheets (550 x 2 Trays)  
 Paper Sizes 5.83" x 8.27" - 11" x 17"  
 Paper Weights 16 - 68 lb. Bond / 140 lb. Index (60 - 256 g/m<sup>2</sup>)  
 Dimensions (WxDxH) 22.8" x 24.4" x 10.2"  
 Weight Less than 57 lbs.

### Tandem Large Capacity Tray (LCT) (PB3050)<sup>1</sup>

Paper Capacity 2,000 sheets Tandem Tray (1,000 x 2 Trays)  
 Paper Sizes 8.5" x 11" LEF  
 Paper Weights 16 - 68 lb. Bond / 140 lb. Index (60 - 256 g/m<sup>2</sup>)  
 Dimensions (WxDxH) 22.8" x 24.4" x 10.2"  
 Weight Less than 57 lbs.

### Cabinet Stand (FAC33)<sup>1</sup>

#### Side Large Capacity Tray (LCT) (RT3000)

Paper Capacity 1,200 sheets  
 Paper Sizes 8.5" x 11" LEF  
 Paper Weights 16 - 57 lb. Bond / 80 lb. Cover (60 - 216 g/m<sup>2</sup>)  
 Dimensions (WxDxH) 13.7" x 21.3" x 11.4"  
 Weight Less than 31 lbs.

Requires Two-Tray Paper Bank (PB3040) or Tandem LCT (PB3050).

### 2,000-Sheet Booklet Finisher (SR3020)<sup>2</sup>

Paper Sizes 5.5" x 8.5" - 11" x 17", 12" x 18"  
 Paper Weights Proof Tray: 14 - 43 lb. Bond / 90 lb. Index (52 - 163 g/m<sup>2</sup>); Shift Tray: 14 - 68 lb. Bond / 140 lb. Index (52 - 256 g/m<sup>2</sup>)  
 Stack Capacity Proof Tray: 250 sheets (8.5" x 11" or smaller), 50 sheets (8.5" x 14" or larger); Shift Tray: 2,000 sheets (8.5" x 11" LEF), 1,000 sheets (8.5" x 11" SEF, 8.5" x 14", 11" x 17", 12" x 18"); Booklet Tray: 30 sets (2 - 5 sheets/set, all sizes, saddle-stitched); 15 sets (6 - 10 sheets/set, all sizes, saddle-stitched); 10 sets (11 - 15 sheets/set, all sizes, saddle-stitched)  
 Staple Capacity 50 sheets (8.5" x 11"), 30 sheets (8.5" x 14" or larger)  
 Saddle Stitch 15 sheets (up to 60 pages)  
 Staple Paper Sizes 8.5" x 11" to 11" x 17"  
 Staple Paper Weights 17 - 24 lb. Bond (64 - 90 g/m<sup>2</sup>)  
 Staple Positions 1 staple/3 positions; 2 staples/2 positions;  
 Dimensions (WxDxH) 25.8" x 24.2" x 37.8"  
 Weight Approx. 138.9 lbs. without Punch Unit Option; Approx. 143.3 lbs. with Punch Unit Option

2/3-Hole Punch Unit Option available for Booklet Finisher (SR3020).

### 3,000-Sheet Finisher (SR3030)<sup>2</sup>

Paper Sizes 5.5" x 8.5" - 11" x 17", 12" x 18"  
 Paper Weights Proof Tray: 14 - 43 lb. Bond / 90 lb. Index (52 - 163 g/m<sup>2</sup>); Shift Tray: 14 - 68 lb. Bond / 140 lb. Index (52 - 256 g/m<sup>2</sup>)  
 Stack Capacity Proof Tray: 250 sheets (8.5" x 11" or smaller), 50 sheets (8.5" x 14" or larger); Shift Tray: 3,000 sheets (8.5" x 11" LEF), 1,500 sheets (8.5" x 11" SEF, 8.5" x 14", 11" x 17", 12" x 18"), 100 sheets (5.5" x 8.5")  
 Staple Capacity 50 sheets (8.5" x 11" LEF), 30 sheets (8.5" x 14" or larger)  
 Staple Paper Sizes 8.5" x 11" - 11" x 17"  
 Staple Paper Weights 17 - 24 lb. Bond (64 - 90 g/m<sup>2</sup>)  
 Staple Positions 1 staple/3 positions; 2 staples/1 position;  
 Dimensions (WxDxH) 25.8" x 24.2" x 37.8"  
 Weight Approx. 119 lbs. without Punch Unit Option; Approx. 123.5 lbs. with Punch Unit Option

2/3-Hole Punch Unit Option available for Finisher (SR3030).

### 1,000-Sheet Finisher (SR790)<sup>2</sup>

Paper Sizes 5.5" x 8.5" - 11" x 17", 12" x 18" in Proof Tray  
 Paper Weights Proof Tray: 14 - 68 lb. Bond / 140 lb. Index (52 - 260 g/m<sup>2</sup>); Shift Tray: 14 - 43 lb. Bond / 90 lb. Index (52 - 163 g/m<sup>2</sup>)  
 Stack Capacity Proof Tray: 250 sheets (8.5" x 11" or smaller), 50 sheets (8.5" x 14" or larger); Shift Tray: 1,000 sheets (8.5" x 11"), 500 sheets (8.5" x 14" or larger), 100 sheets (5.5" x 8.5")  
 Staple Capacity 50 sheets (8.5" x 11"), 30 sheets (8.5" x 14" or larger)  
 Staple Paper Sizes 8.5" x 11" - 11" x 17"  
 Staple Paper Weights 17 - 28 lb. Bond (64 - 90 g/m<sup>2</sup>)  
 Staple Positions 1 staple/2 positions; 2 staples/1 position  
 Dimensions (WxDxH) 10.7" x 20.5" x 31.2"  
 Weight 55.2 lbs.

### Internal Shift-Sort Tray (SH3040)

Paper Sizes 5.5" x 8.5" - 12" x 18"  
 Paper Weights 14 - 68 lb. Bond / 140 lb. Index (52 - 256 g/m<sup>2</sup>)  
 Paper Capacity 250 sheets (8.5" x 11" or smaller)  
 125 sheets (8.5" x 14" or larger)  
 Weight Approx. 4.4 lbs.

Internal Shift-Sort Tray cannot be installed with a finisher.

### Inner One-Bin Tray (BN3070)

Paper Sizes 5.5" x 8.5" - 11" x 17"  
 Bin Capacity 125 sheets  
 Paper Weights 16 - 50 lb. Bond / 90 lb. Index (60 - 169 g/m<sup>2</sup>)  
 Weight Approx. 5.5 lbs.

<sup>1</sup>Please note either the Cabinet Stand or one of the paper options must be installed.

<sup>2</sup>All finishers require Bridge Unit.

**GENERAL SPECIFICATIONS**

<b>Printing Process</b>	Dry Electrostatic Transfer System with Dual Component Magnetic Brush Development; 4-Drum Method
<b>Output Speed</b>	LD540C: 40-ppm Full-Color/BW LD550C: 50-ppm Full-Color/BW
<b>Warm-Up Time</b>	LD540C: 34 seconds LD550C: 51 seconds
<b>First Copy Time</b>	LD540C: Full-Color: 6.5 sec. / BW: 3.9 sec. LD550C: Full-Color: 5.9 sec. / BW: 3.5 sec.
<b>Copy Resolution</b>	600 dpi
<b>Document Feeder</b>	Automatic Reversing Document Feeder (ARDF)/Standard Original capacity: 100 sheets Paper size: 5.5" x 8.5" - 11" x 17" Paper weight (simplex): 10 - 34 lb. Bond (40 - 128 g/m <sup>2</sup> ) Paper weight (duplex): 14 - 34 lb. Bond (52 - 128 g/m <sup>2</sup> ) Dimensions: 22.5" x 20.5" x 5.4"
<b>Exposure Glass</b>	Up to 11" x 17"
<b>Multiple Copies</b>	Up to 999 copies
<b>Copy Size</b>	11" x 17" max. (full bleed on 12" x 18")
<b>Input Capacity</b>	Standard: 2 x 550 sheets + 100-Sheet Bypass Tray; Maximum: 4,400 sheets (w/Tandem LCT and Side LCT)
<b>Output Capacity</b>	Standard: 500 sheets Face Down; Maximum: 3,625 sheets (with 3,000-Sheet Finisher + Inner 1-Bin Tray)
<b>Paper Sizes</b>	First Paper Tray: 8.5" x 11" LEF Second Paper Tray/Paper Bank: 7.25" x 10.5" - 11" x 17"; Bypass Tray: Width: 3.5" - 12", Length: 5.8" - 23.6"; Tandem Large Capacity Tray: 8.5" x 11" LEF; Side Large Capacity Tray: 8.5" x 11" LEF
<b>Paper Weights</b>	Standard Trays/Bypass Tray/Two-Tray Paper Bank/Tandem LCT: 16 - 68 lb. Bond / 140 lb. Index (60 - 256 g/m <sup>2</sup> ); Side LCT: 16 - 57 lb. Bond / 80 lb. Cover (60 - 216 g/m <sup>2</sup> ); Duplex Unit: 16 - 45 lb. Bond / 90 lb. Index (60 - 169 g/m <sup>2</sup> )
<b>Paper Types</b>	Plain/recycled paper, laser printer qualified transparencies, labels, envelopes
<b>Auto Duplex</b>	Standard
<b>Zoom</b>	25% - 400% in 1% increments
<b>Preset Reduction</b>	93%, 85%, 78%, 73%, 65%, 50%, 25%
<b>Preset Enlargement</b>	400%, 200%, 155%, 129%, 121%
<b>Dimensions (WxDxH)</b>	26.4" x 26.7" x 30" (standard configuration)
<b>Weight</b>	Less than 287 lbs. (130 kg) (w/ARDF)
<b>Power Requirements</b>	120V, 12A, 60Hz
<b>Power Consumption</b>	1,500 Watts max.

**PRINTER CONTROLLER SPECIFICATIONS (STANDARD)**

<b>CPU</b>	Intel Celeron-M 1.0 GHz
<b>Memory</b>	1 GB RAM and 160 GB HDD standard (shared)
<b>Max. Print Speed</b>	LD540C: 40-ppm Full-Color/BW LD550C: 50-ppm Full-Color/BW
<b>Print Drivers</b>	Standard: RPCS, PCL 5c, PCL 6, XPS via download; Optional: Genuine Adobe® Postscript® 3™ (includes PDF Direct Print), PS Driver for Mobile Printing
<b>Max. Print Resolution</b>	1200 x 1200 dpi
<b>Standard Interfaces</b>	Ethernet (10Base-T/100Base-TX), USB 2.0, USB Host I/F
<b>Optional Interfaces</b>	Gigabit Ethernet (1000Base-T), IEEE 1284/ECP Parallel, IEEE 802.11a/b/g Wireless LAN, Bluetooth, USB 2.0/SD Slot
<b>Network/OS</b>	Windows 2000/XP/Server 2003/Server 2008*/Vista; Netware 3.12, 3.2, 4.1, 4.11, 5.0, 5.1, 6, 6.5; UNIX; Sun Solaris, HP-UX, SCO OpenServer, RedHat Linux, IBM AIX; Mac OS 8.6 - 9.2x, OS X 10.1 or later; SAP R/3, NDPS Gateway; IBM iSeries; AS/400-using OS/400 Host Print Transform
<b>Advanced Features</b>	WS Printer Support, Advanced Print Queues (Sample Print, Locked Print, Hold Print, Stored Print), Black Overprint, CLP Simulation, Pantone Color Palette, Chaptering, Classification Codes, Mail-to-Print (requires Fax and PS3 options), PDF Direct Print (requires PS3 option), PictBridge® Support (requires Camera Direct Print Card option) Bonjour/DDNS Support
<b>Utilities</b>	SmartDeviceMonitor for Admin and Client; Web SmartDeviceMonitor; Web Image Monitor; Print Utility for MAC (w/Adobe PS3 option)

\*Server 2008 is not included on the driver CD that ships with the system. It is available via download from the Ricoh Web site.

**SECURITY SPECIFICATIONS (STANDARD)**

**DataOverwriteSecurity System (DOSS)** (Optional): Security feature that overwrites latent data on the system's hard drive after copy, print, scan and fax jobs

**Copy Data Security Unit** (Optional): Copies of prints made with this feature will be blacked out or embedded with a watermark to deter illegal copying

**HDD Encryption Unit** (Optional): Encrypts data on HDD, so data is secure even if HDD is stolen

**Other Security Features:** Network Protocol On/Off, IP Filtering, SNMP v3 Support, Encryption (Address Book, Password, PDF, SSL Communication, S/MIME, IPsec Communication), Locked (Secure) Print, User Authentication (Windows/LDAP with Kerberos Authentication (External), Basic and User Codes (Internal), 802.1x Wired Authentication, WPA/WPA2 (Wi-Fi Protect Access Support), and more

**SCANNER SPECIFICATIONS**

<b>Scanner Resolution</b>	600/400/300/200/100 dpi (1,200 dpi for TWAIN only)
<b>Scanning Speed</b>	63-ipm BW and 60-ipm Full-Color (8.5" x 11" LEF/200 dpi)
<b>Auto Scan Size Detection</b>	Glass: 11" x 17", 8.5" x 14", 8.5" x 11"; ARDF: 5.5" x 8.5" - 11" x 17"
<b>Scan Mode</b>	BW Text/Line Art, BW Text, BW Text/Photo, BW Photo, BW Grayscale, Full-Color Photo, Full-Color Text, Auto Color Select (ACS)
<b>Compression Method</b>	BW: TIFF (MH, MR, MMR); Grayscale / Full-Color: JPEG
<b>Scan-to Modes Supported</b>	Scan-to-Email (with LDAP support); Scan-to-URL; Scan-to-Folder (SMB/FTP/NCP); Network TWAIN scanning; WS Scanner (for Vista); Scan-to-Media (USB/SD) (optional)

**DOCUMENT SERVER SPECIFICATIONS (STANDARD)**

<b>Max. Stored Documents</b>	3,000 documents
<b>Max. Pages per Document</b>	2,000 pages
<b>Max. Total Pages of Stored Documents</b>	9,000 pages

**FACSIMILE SPECIFICATIONS (OPTIONAL)\***

<b>Fax Option Type C5000 (standard on SPF model)</b>	
<b>Type</b>	ITU-T (CCITT) G3, additional G3 (optional)
<b>Circuit</b>	PSTN, PBX
<b>Resolution</b>	200 x 100 dpi, 200 x 200 dpi, 400 x 400 dpi (with optional fax SAF memory)
<b>Modem Speed</b>	33.6K - 2,400 bps w/Auto fallback
<b>Compression Method</b>	MH, MR, MMR, JBIG
<b>Transmission Speed</b>	G3: Approximately 2 seconds/page (w/JBIG); G3: Approximately 3 seconds/page (w/MMR)
<b>Scan Speed</b>	0.35 seconds/page LEF (Standard/Detail Mode); 0.64 seconds/page LEF (Super Fine Mode)
<b>Auto Dialing</b>	2,000 Quick Dials, 100 Group Dials (500 numbers per group)
<b>Memory Capacity (SAF)</b>	Standard 4 MB (approximately 320 pages); Maximum 28 MB (2,240 pages)
<b>Additional Modes</b>	Internet Fax by E-mail (T.37); IP Fax (T.38); LAN Fax; Fax Forward to E-mail/Folder; LDAP Support
<b>Options</b>	Additional G3 Lines (up to 2); Fax SAF Memory; Telephone Handset

\*Faxing is standard on the LD540CSPF/LD550CSPF models.

**ADDITIONAL ACCESSORIES**

File Format Converter, Key Counter Bracket, JAVA VM Card for Embedded Software Architecture™ Applications, Optional Counter Interface, USB 2.0/SD Slot (for Scanner-to-Media), Camera Direct Print Card, Fiery™ Print Controller

**SUPPLIES AND CONSUMABLES\***

<b>Black Toner</b>	23,000 pages
<b>Cyan, Magenta, Yellow Toners</b>	17,000 pages each

\*Toner yields based on 5% coverage.

[www.lanier.com](http://www.lanier.com)

**Bringing Lanier Value to Your Organization**

Lanier technology offers a diverse portfolio of solutions to help your organization stay competitive and move ahead. Let Lanier show you how to empower your business to improve critical processes, keep information secure, ensure compliance and promote environmental sustainability while reducing the total cost of ownership.

Printed in U.S.A. on recycled paper.

Lanier, Five Dedrick Place, West Caldwell, NJ 07006

©2008 Lanier is a registered trademark of Ricoh Americas Corporation. All other trademarks are the property of their respective owners. Print speed may be affected by network, application or PC performance. Specifications and external appearances are subject to change without notice. Products are shown with optional features.

L2804

